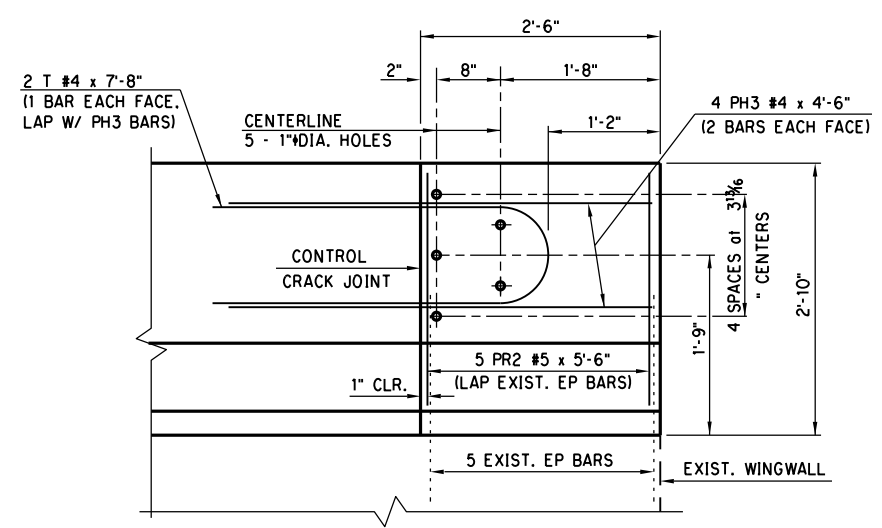
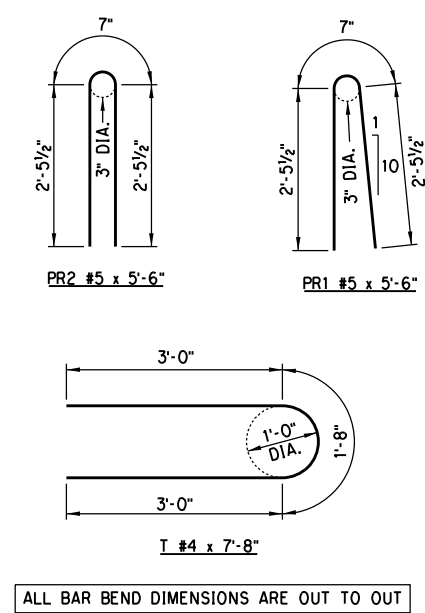


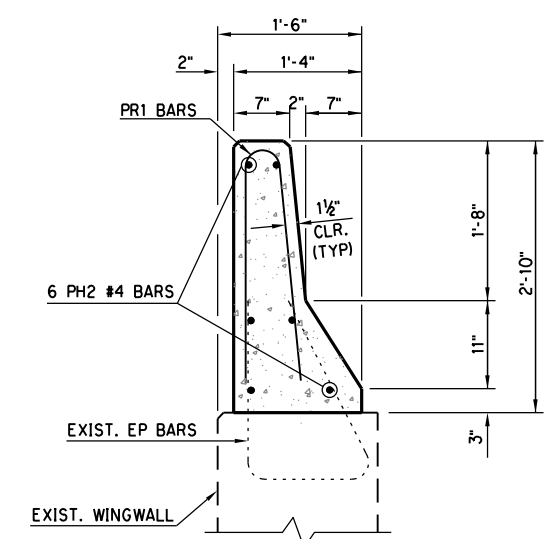
DESCRIPTION	REVISIONS	DATE



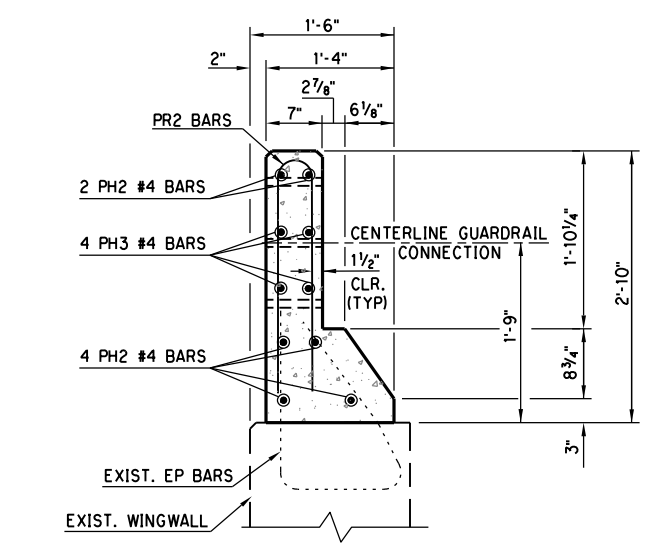
MODIFIED ELEVATION OF GUARDRAIL CONNECTION HOLES AND BLOCKOUT



ALL BAR BEND DIMENSIONS ARE OUT TO OUT



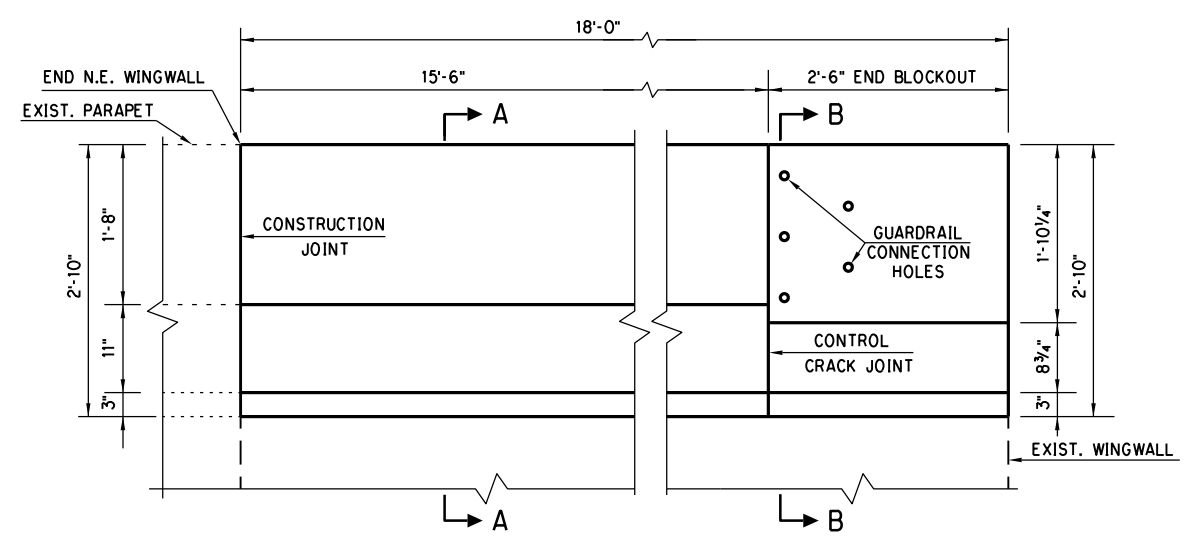
SECTION A-A



SECTION B-B MODIFIED SECTION THRU BLOCKOUT AT END OF APPROACH SLAB PARAPET

CONCRETE PARAPET NOTES

- CONSTRUCT THE SLOPED FACE CONCRETE PARAPET TO MEET THE REQUIREMENTS OF THE STANDARD SPECIFICATIONS FOR HIGHWAY CONSTRUCTION (ENGLISH), AS WELL AS THE FOLLOWING REQUIREMENTS:
- CLASS AA CONCRETE:** CLASS AA CONCRETE SHALL BE USED IN THE PARAPET. ALL COST OF CONCRETE TO BE INCLUDED IN THE PRICE BID PER LINEAR FOOT OF "CONCRETE PARAPET".
- REINFORCING STEEL:** EXISTING EP BARS SHALL BE EXPOSED AND CLEANED. ALL REINFORCING STEEL USED IN THE PARAPET SHALL BE EPOXY COATED. TIE ALL EP BARS BEFORE CONCRETE IS PLACED IN THE PARAPET. ALL REINFORCING STEEL IN THE PARAPET SHALL BE INCLUDED IN THE UNIT PRICE BID PER LINEAR FOOT OF "CONCRETE PARAPET".
- CONSTRUCTION JOINTS:** PLACE A CONSTRUCTION JOINT AT THE ABUTMENT. PLACE 1/4" THICK PREFORMED EXPANSION MATERIAL IN THE CONSTRUCTION JOINT IN ACCORDANCE WITH THE DETAILS SHOWN.
- CONTROL CRACK JOINTS:** PROVIDE DOUBLE 3/4" CHAMFERS OR 3/4" DEEP SAWCUT IN ACCORDANCE WITH THE DETAILS SHOWN. PLACE CONTROL CRACK JOINT AT LOCATION SHOWN OR AS DIRECTED BY THE ENGINEER.
- GUARDRAIL CONNECTIONS:** FORM OR DRILL HOLES, AS SHOWN, FOR THE CONNECTION OF THE THRIE-BEAM GUARDRAIL TERMINAL CONNECTION (END SHOE AT LOCATION SHOWN IN THE PLANS OR AS DIRECTED BY THE ENGINEER. IT IS THE RESPONSIBILITY OF THE BRIDGE CONTRACTOR TO PROVIDE THE HOLES. THE CONTRACTOR THAT INSTALLS THE GUARDRAIL WILL BE RESPONSIBLE FOR INSTALLING THE THRIE-BEAM GUARDRAIL TERMINAL CONNECTION.



ELEVATION SLOPED FACE PARAPET
(FOR GUARDRAIL CONNECTION HOLE DETAILS SEE MODIFIED ELEVATION THIS SHEET)

BAR LIST (EPOXY COATED)					
FOR INFORMATION ONLY					
MARK	NO.	SIZE	FORM	SPACING	LENGTH
PH2	6	#5	STR.	AS SHOWN	17'-8"
PH3	4	#4	STR.	AS SHOWN	4'-6"
PR1	32	#5	BNT.	6" C/C	5'-6"
PR2	5	#5	BNT.	EQ. SPA.	5'-6"
T	2	#4	BNT.	AS SHOWN	7'-8"

QUANTITIES		
ITEM	UNIT	TOTAL
CONCRETE PARAPET	L.F.	18

NOTE: SEE STD. SFPI-2-00E FOR ADDITIONAL DETAILS.

Design			<p align="center">SLOPED FACE PARAPET DETAILS</p> <p align="right">State Job No. 30444(06) Sheet No. 24</p>
Drawn			
Checked			
Approved			
Squad	POE		

OKLAHOMA COUNTY
S.B. I-35 LINE 4

8/21/2017 2:32:46 PM H:\PROJECTS\2016\0801_EC-68\Bridges\Drawings\40-155.dwg - For open.dgn